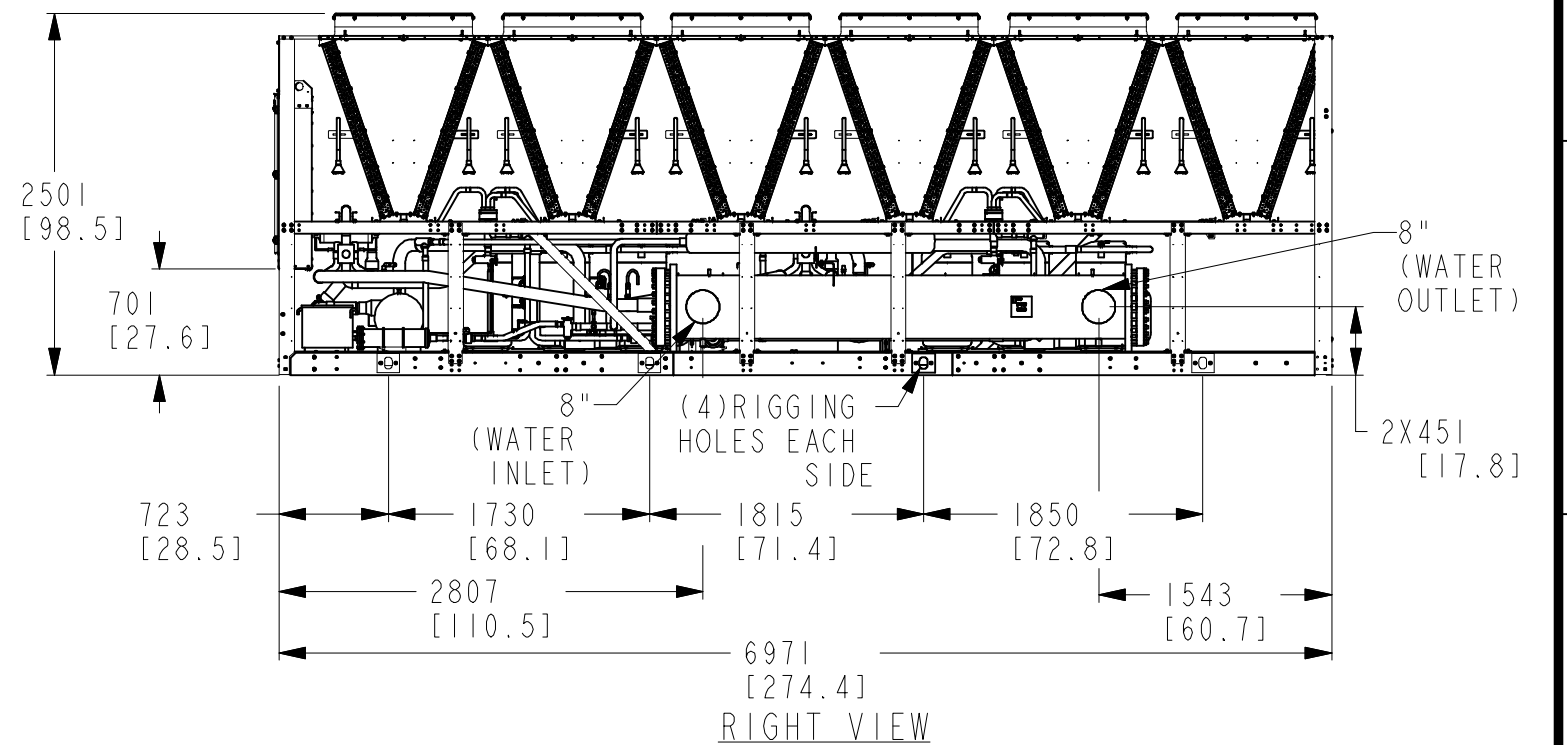
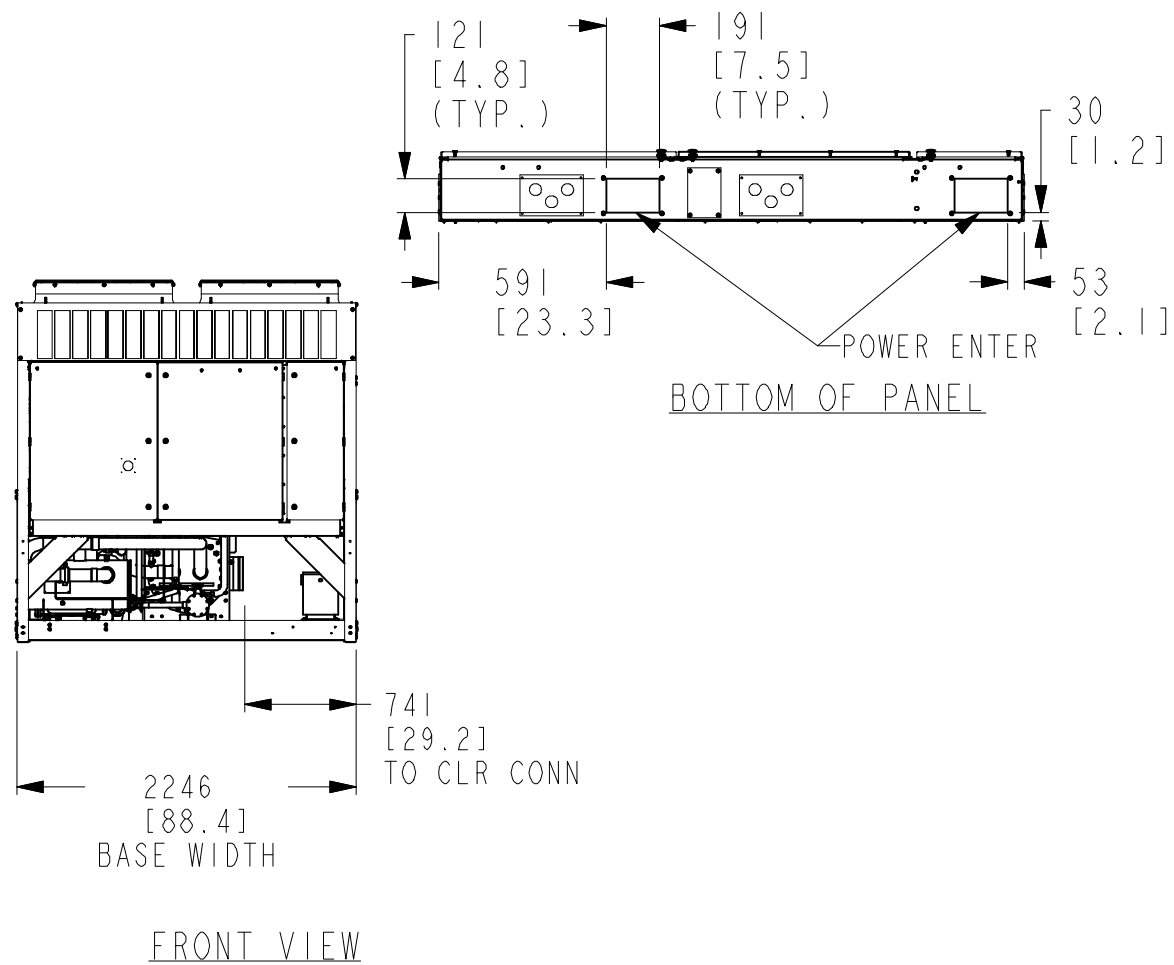
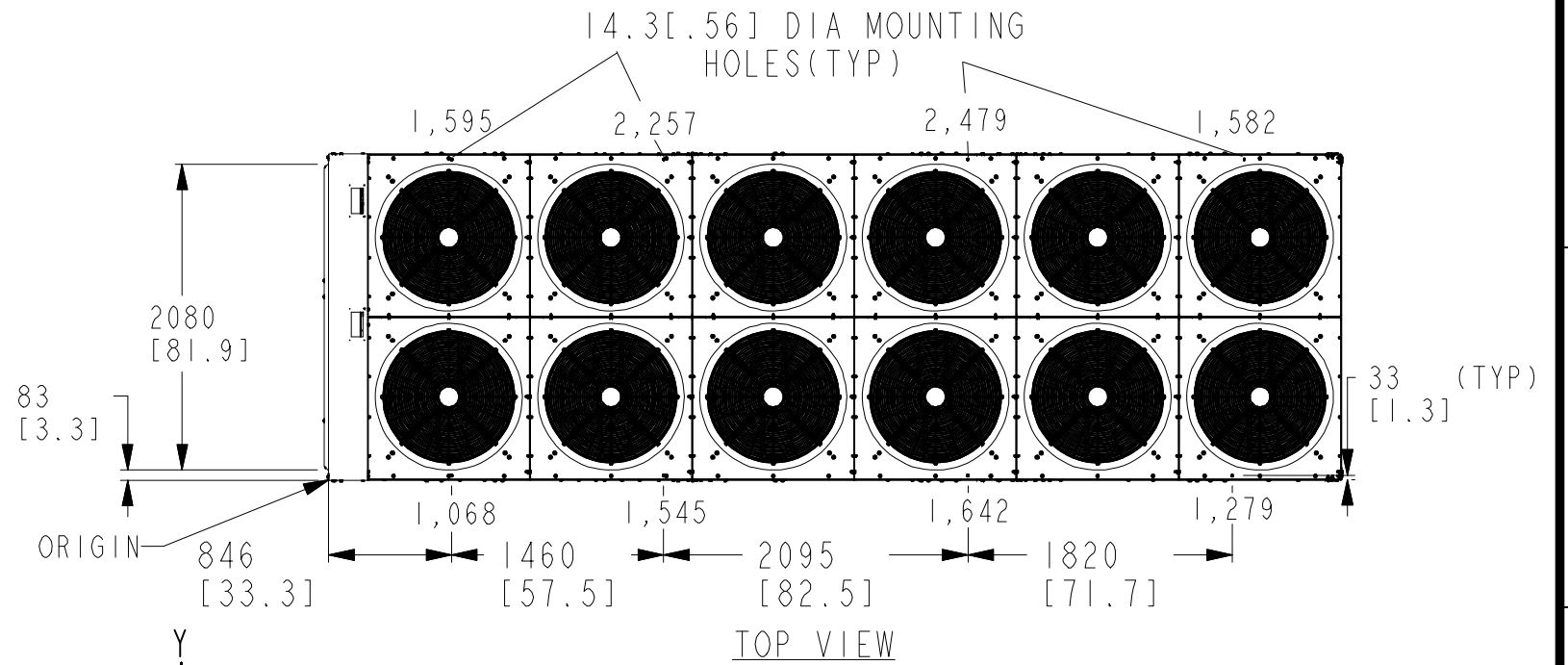


- NOTES:
1. PLACEMENT ON A LEVEL SURFACE FREE OF OBSTRUCTIONS (INCLUDING SNOW, FOR WINTER OPERATION) OR AIR RECIRCULATION ENSURES RATED PERFORMANCE, RELIABLE OPERATION AND EASE OF MAINTENANCE. SITE RESTRICTIONS MAY COMPROMISE MINIMUM CLEARANCES INDICATED BELOW, RESULTING IN UNPREDICTABLE AIR FLOW PATTERNS AND POSSIBLE DIMINISHED PERFORMANCE. YORK'S UNIT CONTROLS WILL OPTIMIZE OPERATION WITHOUT NUISANCE HIGH PRESSURE SAFETY CUTOUT; HOWEVER, THE SYSTEM DESIGNER MUST CONSIDER POTENTIAL PERFORMANCE DEGRADATION. RECOMMENDED MINIMUM CLEARANCES: COIL SIDE - 2m COMPRESSOR SIDE - 1.2m; CONTROL SIDE - 2m; TOP - NO OBSTRUCTIONS ALLOWED; DISTANCE BETWEEN ADJACENT UNIT - 3m. NO MORE THEN ONE ADJACENT WALL MAY BE HIGHER THEN THE UNIT.
  2. WEIGHTS (KG): SHIPPING - 5,800, OPERATING - 6,100.
  3. CENTER OF GRAVITY FROM ORIGIN: X= 3492, Y= 1327.6.
  4. INSTALLING CONTRACTOR MUST INCLUDE VENT AND DRAIN ACCOMODATIONS IN CHILLED WATER PIPING NEAR THE EVAPORATOR.



			<b>JOHNSON CONTROLS - BUILDING EFFICIENCY</b> 507 EAST MICHIGAN STREET, MILWAUKEE, WI, 53202 USA											
<b>REVISION</b> A	REV.	DATE	EC. NO.	DR.	CHK.	ENG.	"ALL PROPRIETARY RIGHTS IN THE SUBJECT MATTER HEREOF ARE RESERVED AND NO PERMISSION IS GRANTED TO REPRODUCE THIS PRINT IN WHOLE OR IN ANY PART, OR DISCLOSE ANY OF THE INFORMATION UPON IT TO OTHERS WITHOUT WRITTEN RELEASE BY JOHNSON CONTROLS INCORPORATED"	DO NOT SCALE UNLESS OTHERWISE SPECIFIED, DIMENSIONS ARE IN MILLIMETERS		PRODUCT DRAWING 0505HE CE YLPA		MATERIAL ENG. STD. PART NO. CUT SIZE		
	-		DX10-0324					DRAWN F.L.PANG 10-SEP-2010 MODELER F.L.PANG 10-SEP-2010 CHKD Y.ZHANG 10-SEP-2010 ENG	A3		CAGE NUMBER 66935		DRAWING NUMBER 075-94325-106	
	NEW							SCALE: 0.091	MASS (kg): SEE ABOVE		ORIG. NO.:		SHEET 1 OF 1	
													REVISION VERSION 0	
													RELEASED	