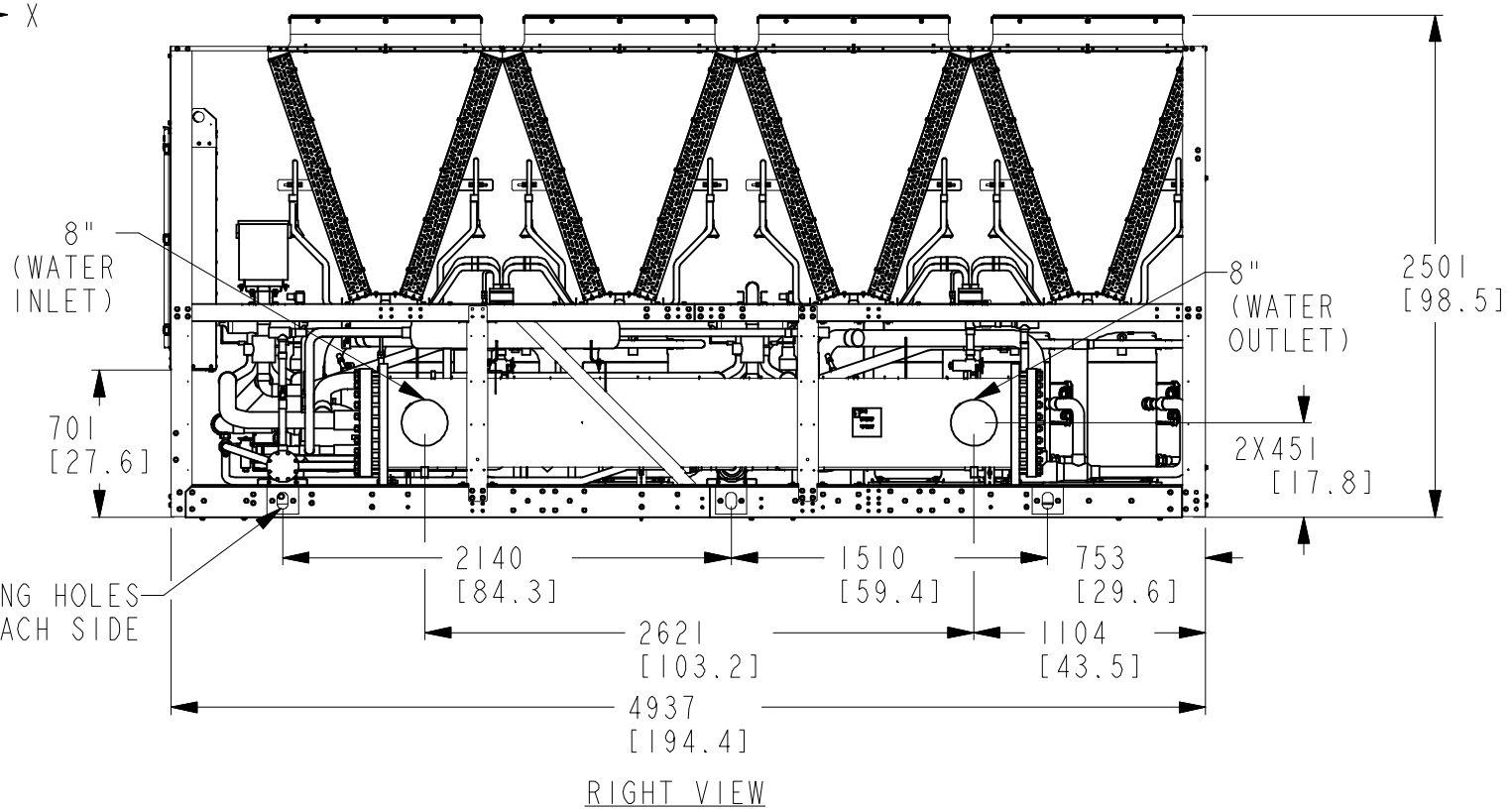
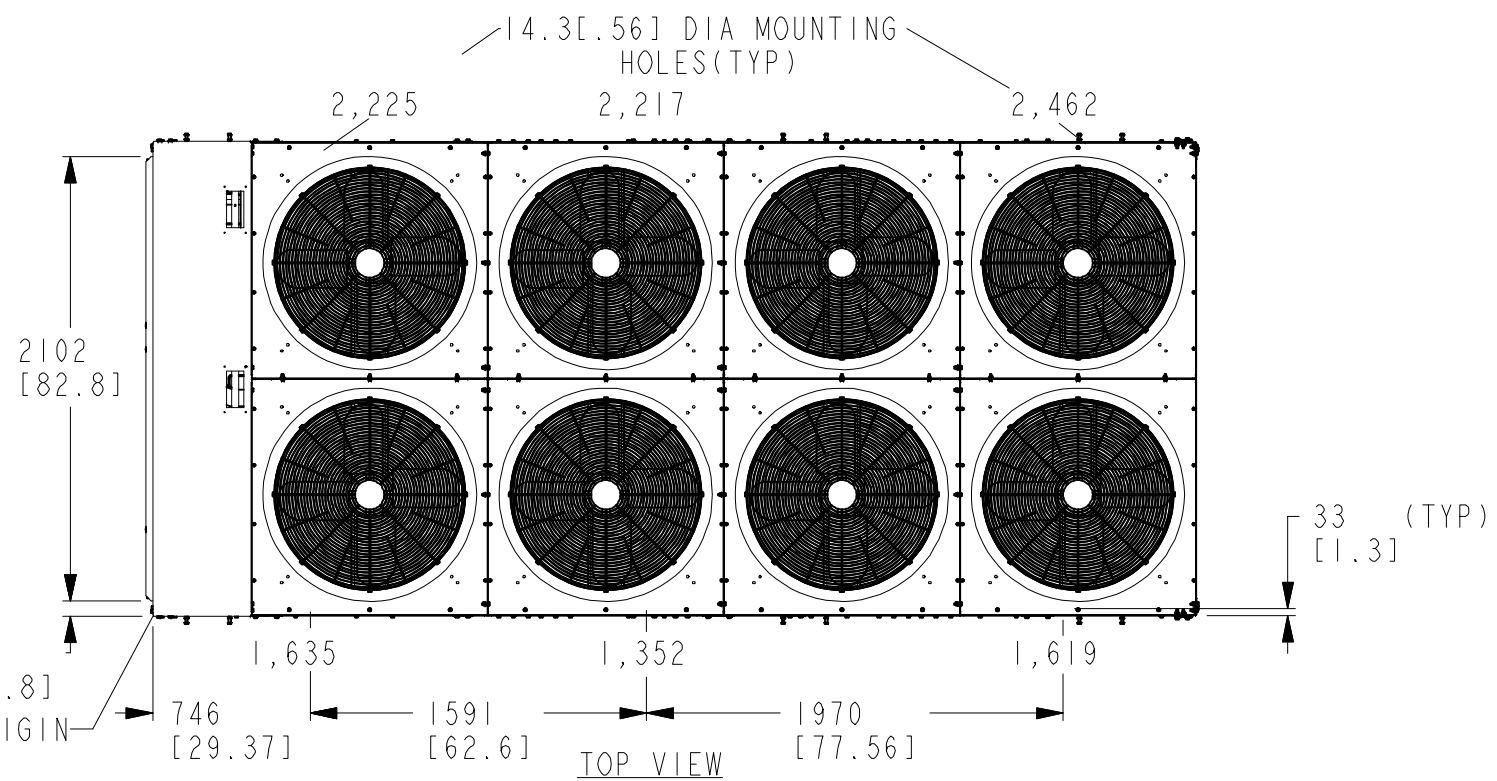
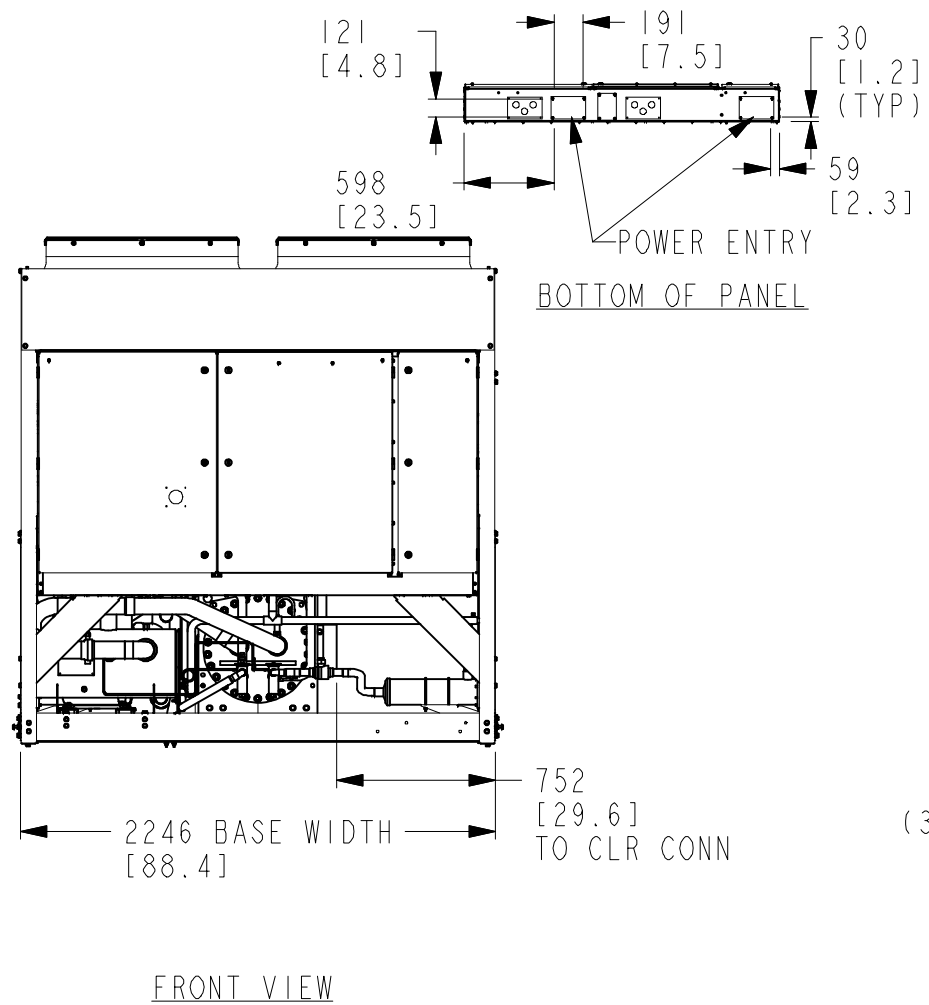


NOTES:
 1. PLACEMENT ON A LEVEL SURFACE FREE OF OBSTRUCTIONS (INCLUDING SNOW, FOR WINTER OPERATION) OR AIR RECIRCULATION ENSURES RATED PERFORMANCE, RELIABLE OPERATION AND EASE OF MAINTENANCE. SITE RESTRICTIONS MAY COMPROMISE MINIMUM CLEARANCES INDICATED BELOW, RESULTING IN UNPREDICTABLE AIR FLOW PATTERNS AND POSSIBLE DIMINISHED PERFORMANCE. YORK'S UNIT CONTROLS WILL OPTIMIZE OPERATION WITHOUT NUISANCE HIGH PRESSURE SAFETY CUTOUT; HOWEVER, THE SYSTEM DESIGNER MUST CONSIDER POTENTIAL PERFORMANCE DEGRADATION. RECOMMENDED MINIMUM CLEARANCES: COIL SIDE - 2m COMPRESSOR SIDE - 1.2m; CONTROL SIDE - 2m; TOP - NO OBSTRUCTIONS ALLOWED; DISTANCE BETWEEN ADJACENT UNITS - 3m. NO MORE THEN ONE ADJACENT WALL MAY BE HIGHER THEN THE UNIT.
 2. WEIGHTS (KG): SHIPPING - 4,900, OPERATING - 5,200.
 3. CENTER OF GRAVITY FROM ORIGIN: X= 2502.0, Y= 1351.7
 4. INSTALLING CONTRACTOR MUST INCLUDE VENT AND DRAIN ACCOMODATIONS IN CHILLED WATER PIPING NEAR THE EVAPORATOR.



				JOHNSON CONTROLS - BUILDING EFFICIENCY 507 EAST MICHIGAN STREET, MILWAUKEE, WI, 53202 USA			
THIRD ANGLE		DO NOT SCALE UNLESS OTHERWISE SPECIFIED, DIMENSIONS ARE IN MILLIMETERS		PRODUCT DRAWING 0495SE CE YLPA		MATERIAL ENG. STD. PART NO. CUT SIZE	
DRAWN Q.LIU		10-SEP-2010		CAGE NUMBER		DRAWING NUMBER	
MODELER Q.LIU		10-SEP-2010		66935		075-94325-105	
CHKD Y.ZHANG		10-SEP-2010		A3		REVISION	
ENG		SCALE: 0.011		MASS (kg): SEE ABOVE		VERSION	
		ORIG. NO.:		SHEET 1 OF 1		0	
						RELEASED	

REV.	DATE	EC. NO.	DR.	CHK.	ENG.
-		DX10-0324			
NEW					

"ALL PROPRIETARY RIGHTS IN THE SUBJECT MATTER HEREOF ARE RESERVED AND NO PERMISSION IS GRANTED TO REPRODUCE THIS PRINT IN WHOLE OR IN ANY PART, OR DISCLOSE ANY OF THE INFORMATION UPON IT TO OTHERS WITHOUT WRITTEN RELEASE BY JOHNSON CONTROLS INCORPORATED"